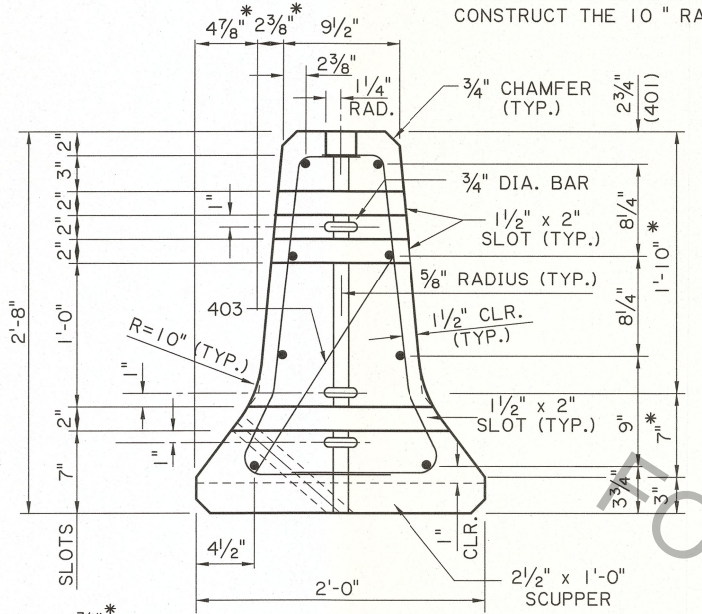
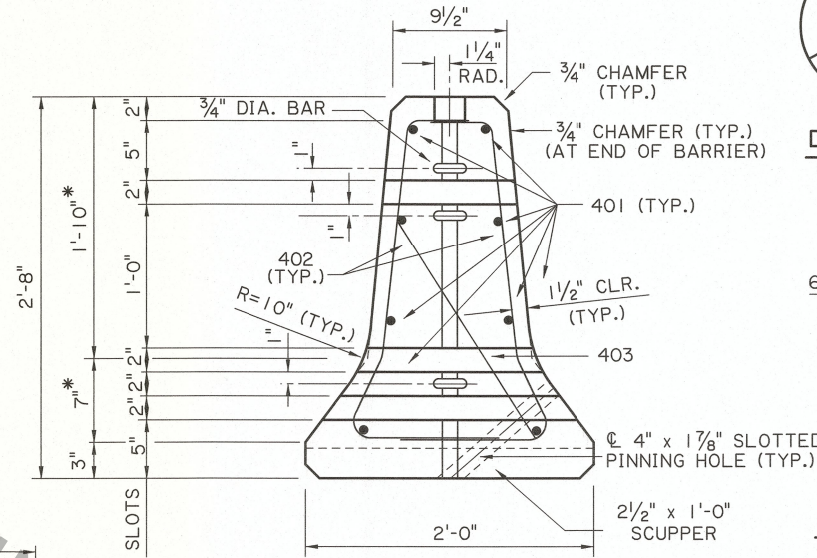


* DIMENSIONS MARKED THIS ARE TO THE INTERSECTION POINT OF THE BARRIER SLOPES. CONSTRUCT THE 10" RADIUS TO PROVIDE A SMOOTH TRANSITION BETWEEN THE SLOPES.

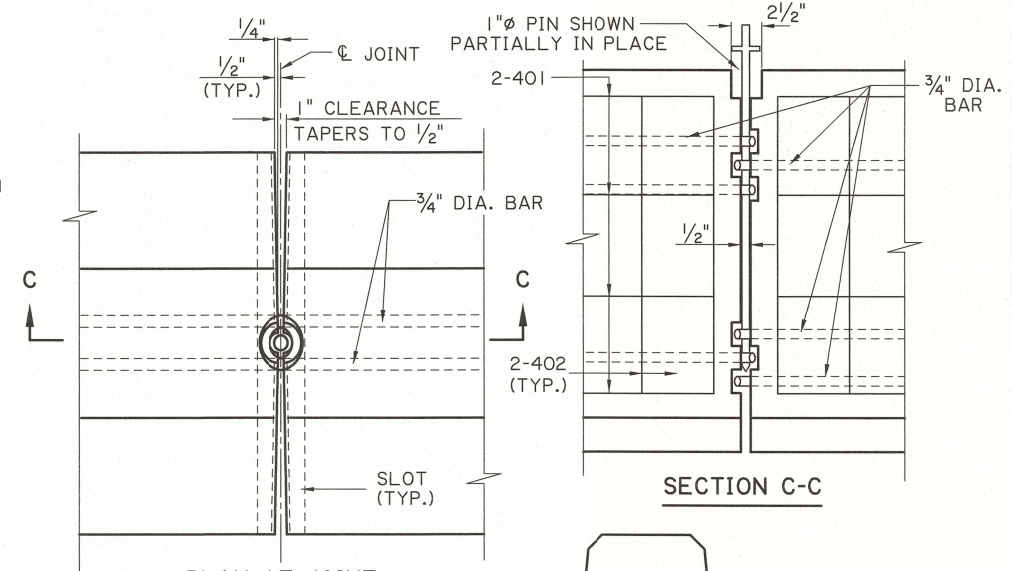


SECTION A-A



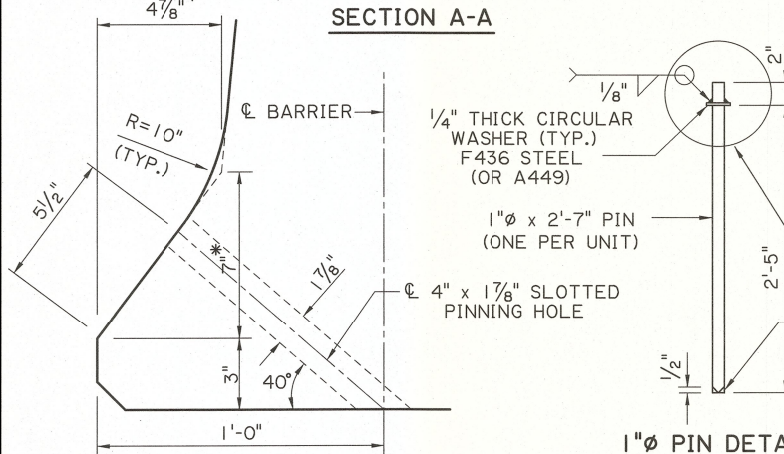
SECTION B-B

DETAIL "B"

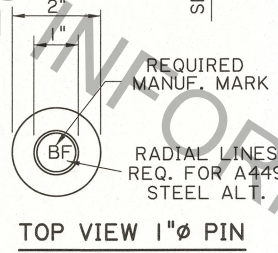


PLAN AT JOINT

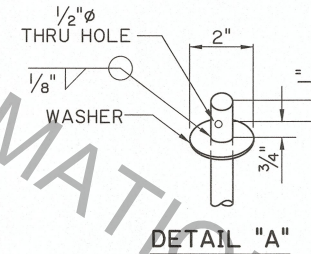
SECTION C-C



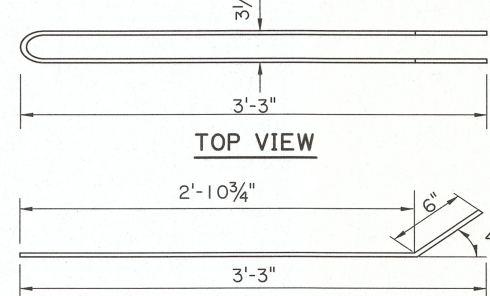
DETAIL SHOWING 10" RADIUS



TOP VIEW 1" Ø PIN

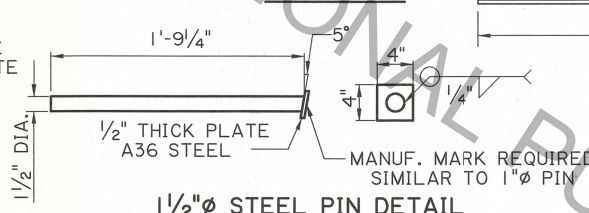


DETAIL "A"



TOP VIEW

SIDE VIEW

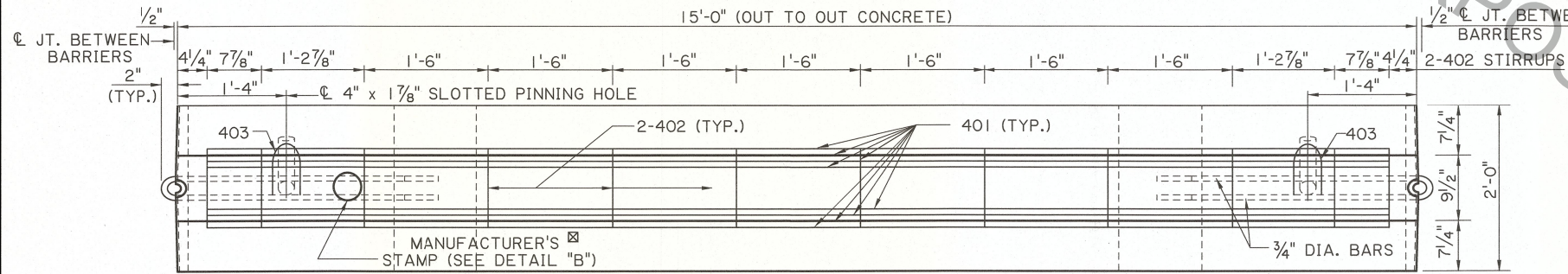


1 1/2" Ø STEEL PIN DETAIL
(TO BE USED FOR BRIDGE DECK APPLICATION)

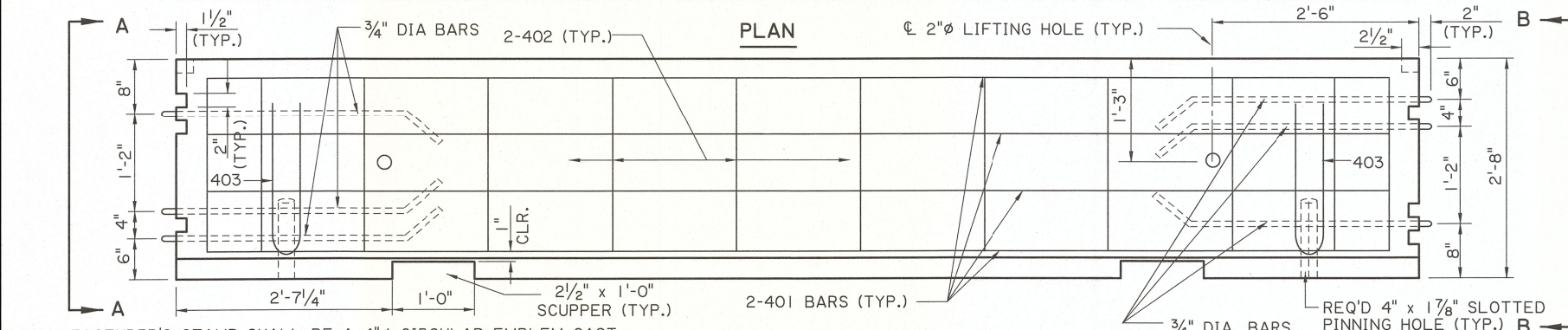
3/4" DIA. BAR
(2" Ø PIN)

NOTES:

- 1" Ø PIN SHALL CONFORM TO ASTM A193 GR B7 OR ASTM A449. 1/2" Ø PIN AND 3/4" DIA. BAR SHALL CONFORM TO ASTM A36.
- ALL REINFORCING STEEL SHALL HAVE A YIELD STRENGTH, fy=60 ksi. ALL REINFORCING STEEL SHALL BE 2" CLEAR FROM FACE OF CONCRETE, UNLESS OTHERWISE NOTED.
- CONCRETE SHALL BE CLASS A1. FOR TEMPORARY CONCRETE BARRIERS, SURFACE RESISTIVITY REQUIREMENTS IN THE STANDARD SPECIFICATIONS SHALL NOT APPLY AND TABLE 901-6, ACCEPTANCE AND PAYMENT SCHEDULES FOR STRUCTURAL CONCRETE (SURFACE RESISTIVITY), WILL NOT BE ENFORCED.
- UPON COMPLETION OF PROJECT, THE CONTRACTOR SHALL REMOVE AND TRANSPORT THE BARRIER UNITS AS DIRECTED BY THE PROJECT ENGINEER.
- GALVANIZING: 1" Ø & 1/2" Ø PIN AND 3/4" DIA. BAR SHALL BE GALVANIZED IN ACCORDANCE WITH ASTM A-123.
- BRIDGE DECK PINNING: WHEN REQUIRED, THE BARRIER PINNING HOLES PROVIDE A METHOD OF LATERALLY RESTRAINING THE BARRIER. EACH BARRIER SHALL REQUIRE TWO HOLES DRILLED INTO THE BRIDGE DECK AS DETAILED, SO THAT TWO PINS MAY BE PLACED INTO THE BARRIER HOLES AND INTO THE DECK. UPON BARRIER REMOVAL, THE DECK HOLES SHALL BE REPAIRED WITH NON-SHRINK GROUT AS DIRECTED BY THE ENGINEER.
- PAYMENT: QUANTITIES SHOWN ARE FOR ESTIMATION PURPOSES ONLY. CLASS A1 CONCRETE, REINFORCING STEEL, STEEL BARS, PINS, WASHERS, DRILLING & GROUTING FOR BRIDGE DECK PINS, AND GALVANIZING ARE TO BE INCLUDED IN THE PRICE FOR "TEMPORARY PRECAST CONCRETE BARRIER".
- PRECAST TEMPORARY CONCRETE BARRIERS SHALL ONLY BE PRODUCED BY A MANUFACTURER LISTED ON THE APPROVED MATERIALS LIST.



PLAN



ELEVATION

MANUFACTURER'S STAMP SHALL BE A 4" Ø CIRCULAR EMBLEM CAST INTO THE TOP FACE OF THE RAIL AND CENTERED 1'-9" FROM THE END OF THE BARRIER. THIS EMBLEM SHALL DISPLAY THE MANUFACTURER'S NAME, LOGO, OR INITIALS, ALONG WITH THE YEAR IN WHICH THE BARRIER WAS FABRICATED (EX. 08) AND THE NUMBER OF THE LATEST REVISION SHOWN ON THIS DETAIL (EX. R0, R1, ETC.).

THESE DETAILS HAVE BEEN SUCCESSFULLY CRASH TESTED AS AN NCHRP 350 TEST LEVEL 3 BARRIER AND SHALL BE USED IN WORK ZONES PARALLEL TO THE DIRECTION OF TRAFFIC.

ESTIMATED QUANTITIES-ONE (1) 15'-0" PRECAST BARRIER				
BAR NO.	UNIT LENGTH	TOTAL LENGTH	LOCATION	
401	8	14'-4"	114'-8"	LONGITUDINAL
402	24	3'-9"	90'-0"	STIRRUPS
403	2	3'-11 5/8"	7'-11 1/4"	PINNING HOLE
TOTAL NO. 4 BARS = 212'-7 1/4" = 142 LBS.				
DEFORMED REINFORCING STEEL = 142 LBS.				
6-3/4" DIA. BAR (A 36 STEEL) = 41'-9" = 63 LBS.				
CLASS A1 CONCRETE = 1.76 CU. YDS.				
BARRIER WEIGHT = 7,136 LBS.				



SHEET NUMBER

DESIGNED BY: K. BRAUNER
CHECKED BY: P. FOSSIER

CONTROL SECTION: C. GRASS
CHECKED BY: K. BRAUNER

REVIEWED BY: JULY 2008
REVISION OR CHANGE ORDER DESCRIPTION

DATE: 11/30/17
NO. 1

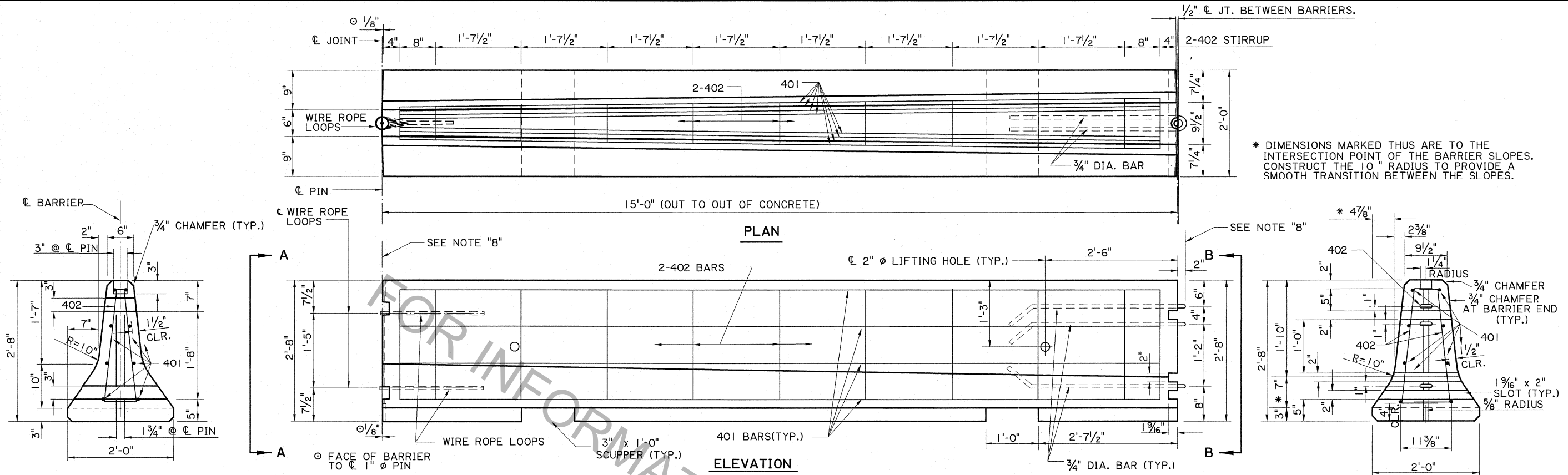
DATE: 9/8/2017
NO. 2

DATE: 2/9/2017
NO. 3

MANUFACTURERS NOTE: K.M.B.
REVISED CONCRETE NOTE: K.M.B.
UPDATED FOR 2016 SPECIFICATIONS: K.M.B.

TEMPORARY PRECAST BARRIER
F SHAPE
BD-2.6.3.1.01

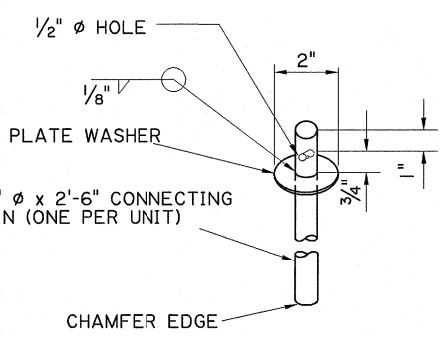
DOTD
DOT BRIDGE DESIGN



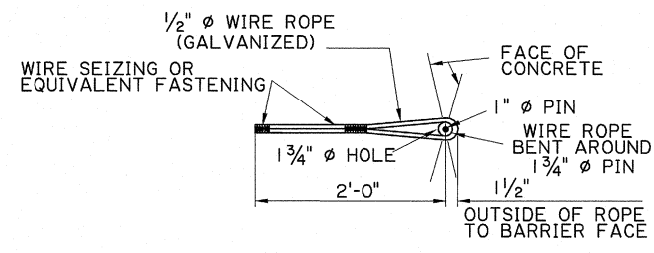
* DIMENSIONS MARKED THUS ARE TO THE INTERSECTION POINT OF THE BARRIER SLOPES. CONSTRUCT THE 10" RADIUS TO PROVIDE A SMOOTH TRANSITION BETWEEN THE SLOPES.

SECTION A-A
SHOWING JERSEY BARRIER END (SEE NOTE "8")

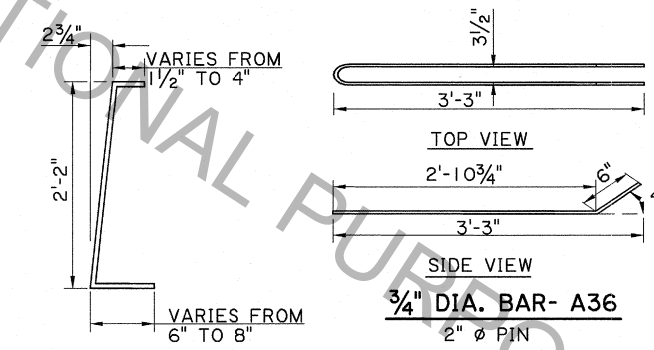
SECTION B-B
SHOWING "F" SHAPE BARRIER END (SEE NOTE "8")



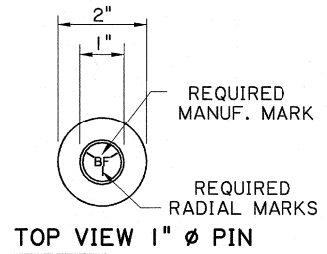
DETAIL "A"



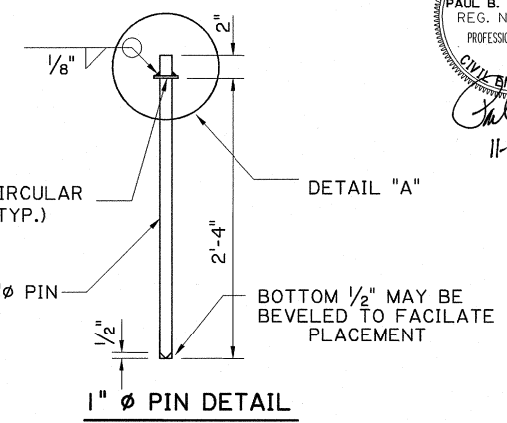
WIRE ROPE LOOP DETAIL



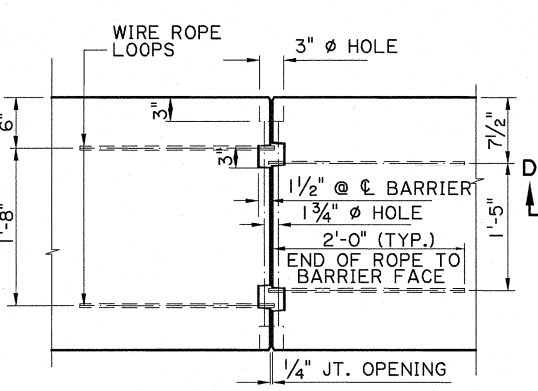
402 STIRRUPS



TOP VIEW 1" DIAMETER PIN

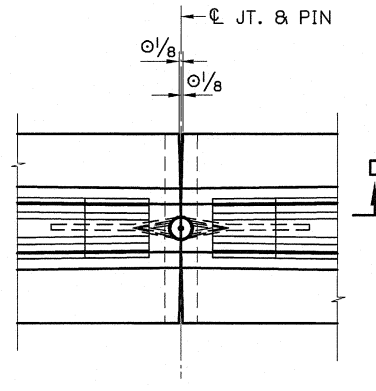


1" DIAMETER PIN DETAIL



SECTION D-D

SHOWING CONNECTION AT JERSEY SHAPE BARRIER END



PLAN AT JOINT

ESTIMATED QUANTITIES-ONE (1) 15'-0" PRECAST TRANSITION BARRIER					
BAR NO.	SHORT BAR	VARIES (FT.)	LONG BAR	TOTAL LENGTH	LOCATION
401	8		14'-4"	114'-8"	LONGITUDINAL
402	22	2'-9"	3'-2"	65'-1"	STIRRUPS
TOTAL NO. 4 BARS = 179'-9" = 120 LBS.					
DEFORMED REINFORCING STEEL = 120 LBS.					
3/4" DIA. BAR-A36 STEEL = 20'-3" = 30 LBS.					
CLASS A1 CONCRETE = 1.71 CU. YDS.					
BARRIER WEIGHT = 6,771 LBS.					



NOTES:

1. TRANSITION BARRIER TO BE USED ONLY WHEN JOINING A TEMPORARY "JERSEY" BARRIER TO A TEMPORARY "F" SHAPE BARRIER. MULTIPLE USE OF THE BARRIER TRANSITION IS NOT ALLOWED ON A PROJECT.
2. 1" DIAMETER STEEL PIN: PIN SHALL CONFORM TO ASTM A449 OR ASTM A193, GRADE B7. 3/4" DIA. STEEL BAR SHALL CONFORM TO ASTM A36.
3. ALL REINFORCING STEEL SHALL HAVE A YIELD STRENGTH, fy=60 ksi. ALL REINFORCING STEEL SHALL BE 2" CLEAR FROM FACE OF CONCRETE, UNLESS OTHERWISE NOTED.
4. CONCRETE BARRIER SHALL BE CLASS A1. ALL PRECAST BARRIER UNITS SHALL BE HELD AT THE PLANT A MINIMUM OF 10 DAYS AFTER CASTING.
5. UPON COMPLETION OF PROJECT, THE CONTRACTOR SHALL REMOVE AND TRANSPORT THE BARRIER UNITS AS DIRECTED BY THE PROJECT ENGINEER.
6. GALVANIZING: 1" DIAMETER PIN, 1/2" WIRE ROPE LOOP, AND 3/4" DIA. BARS SHALL BE GALVANIZED IN ACCORDANCE WITH ASTM A-123.
7. PAYMENT: QUANTITIES SHOWN ARE FOR ESTIMATION PURPOSES ONLY. CLASS A1 CONCRETE, REINFORCING STEEL, PINS, A36 STEEL, WASHERS, WIRE LOOP, AND GALVANIZING ARE TO BE INCLUDED IN PRICE FOR TEMPORARY PRECAST CONCRETE BARRIER (CONTRACTOR FURNISHED) OR TEMPORARY PRECAST CONCRETE BARRIER (DEPARTMENT FURNISHED) PAY ITEM.
8. CONTRACTOR IS REQUIRED TO ORIENT THE TEMPORARY BARRIERS ("JERSEY" SHAPE OR "F" SHAPE) SO THAT EACH BARRIER END WILL CONNECT TO THE PROPER TRANSITION BARRIER END CONNECTION.

SHEET NUMBER	PARISH	DESIGNED BY	DATE
		P. FOSSIER	OCT., 2008
	FEDERAL PROJECT	CHECKED BY	SHEET
		G. GRASS	1
	STATE PROJECT	DATE	
		K.M.B.	
	REVISION DESCRIPTION		
	UPDATED FOR 2016 SPECIFICATIONS		
	2/9/2017		
	NO.		
	BD-2.6.3-2.01		
TEMPORARY PRECAST BARRIER TRANSITION "F" SHAPE TO "N.J." SHAPE			
BRIDGE AND STRUCTURAL DESIGN			